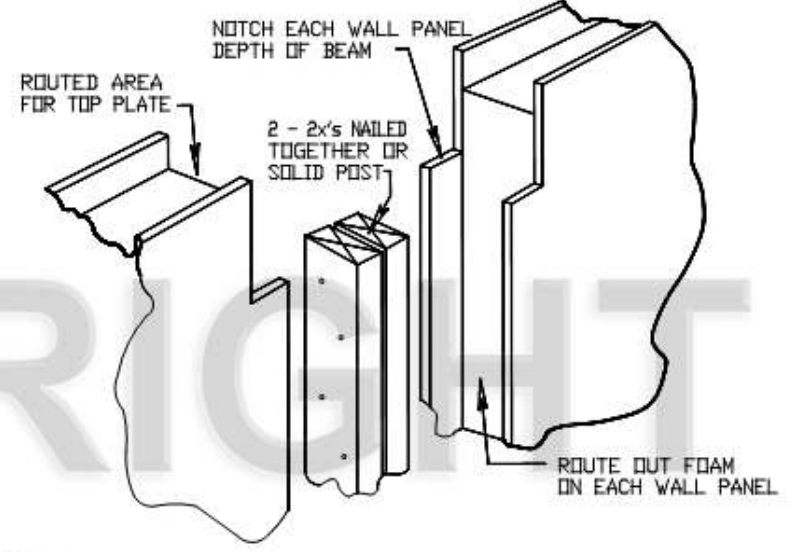


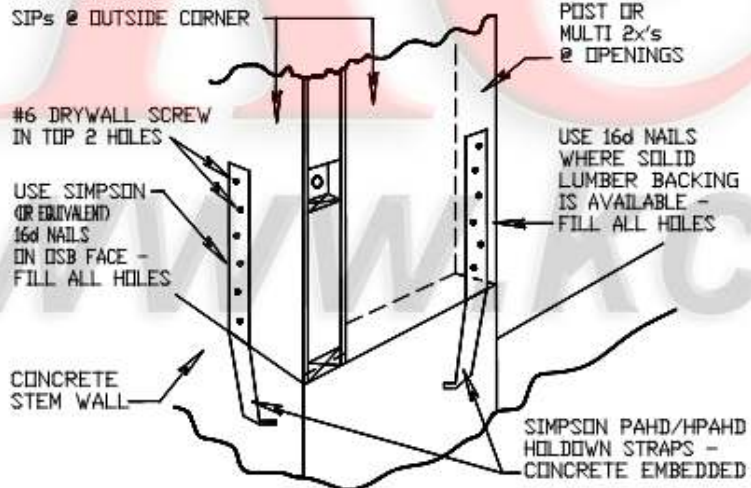
**B1.5** EXTERIOR WALL DETAIL  
NOT TO SCALE

KCB15  
990201



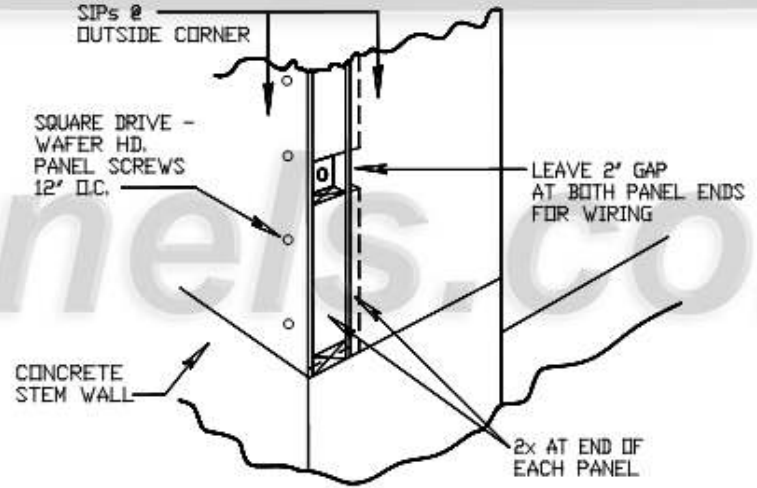
**B1.6** BEARING POST DETAIL  
NOT TO SCALE

KCB16  
990201



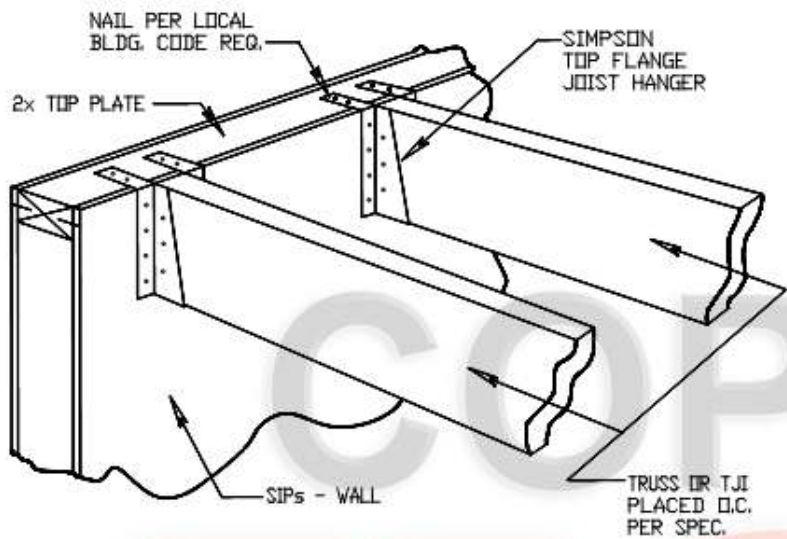
**B1.7** PANEL HOLDOWN DETAIL  
NOT TO SCALE

KCB17  
990201



**B1.8** PANEL CORNER DETAIL  
NOT TO SCALE

KCB18  
990201

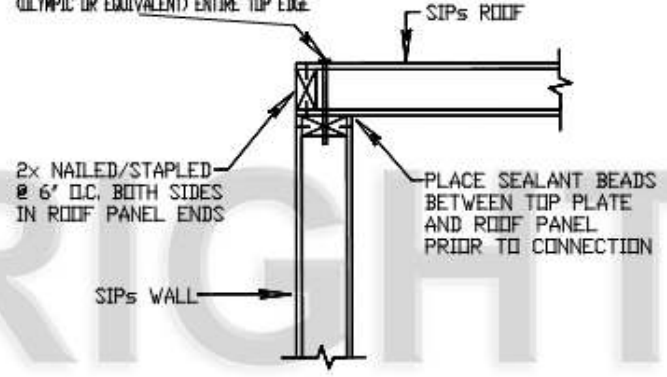


**B2.1** JOIST/TJI SUPPORT DETAIL  
NOT TO SCALE

KCB2.1  
990201

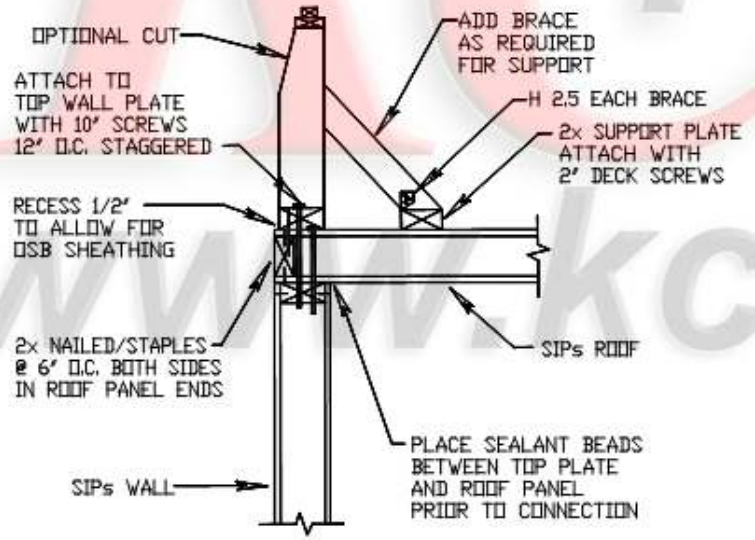
SQUARE DRIVE - WAFFER HD. PANEL SCREWS - 12" O.C. (unless specified otherwise) 19' SHANK W/ 1 1/4" MIN. PENETRATION (OLYMPIC OR EQUIVALENT) ENTIRE TOP EDGE

NOTE: A PITCH OF 3/8" PER FOOT OR GREATER IS RECOMMENDED



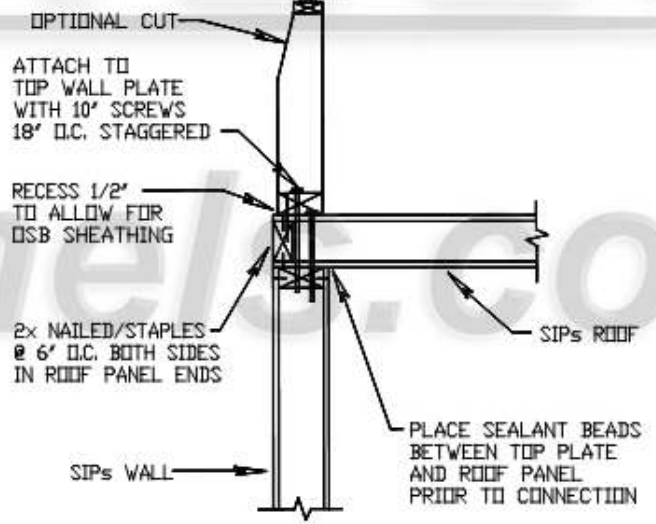
**B2.2** PANEL FLAT ROOF DETAIL  
NOT TO SCALE

KCB2.2  
990201



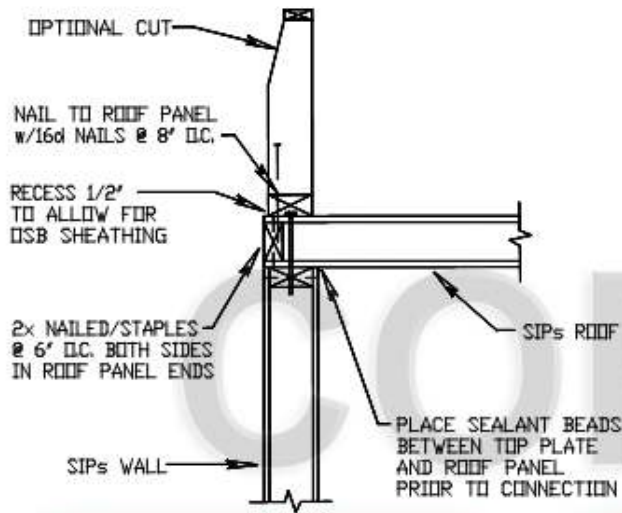
**B2.3** PARAPET DETAIL - TALL  
NOT TO SCALE

KCB2.3  
990201



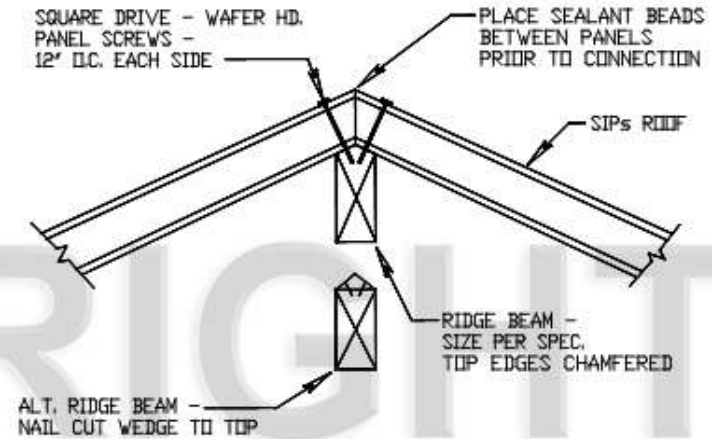
**B2.4** PARAPET DETAIL - MEDIUM  
NOT TO SCALE

KCB2.4  
990201



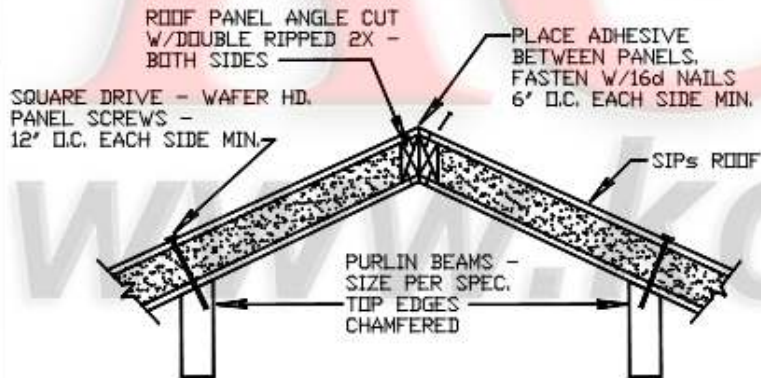
**B2.5** PARAPET DETAIL - SHORT  
NOT TO SCALE

KCB25  
990201



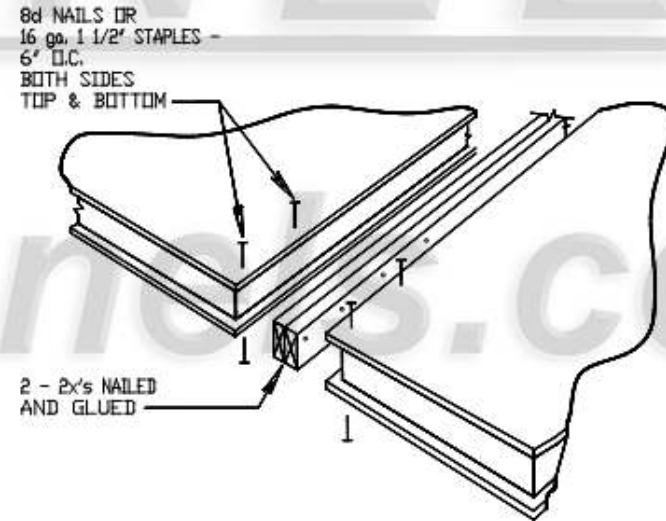
**B2.6** RIDGE JOINT DETAIL - A  
NOT TO SCALE

KCB26  
990201



**B2.7** RIDGE JOINT DETAIL -B  
NOT TO SCALE

KCB27



**B2.8** ROOF/FLOOR PANEL SPLINE  
NOT TO SCALE

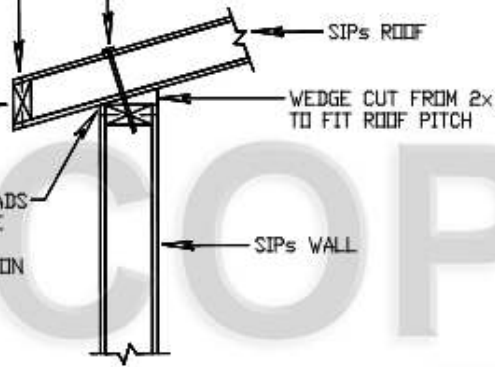
KCB28  
990201

DOUBLE RIPPED 2x  
NAILED/STAPLED @ 6' O.C.  
BOTH SIDES IN  
ROOF PANEL ENDS

SQUARE DRIVE - WAFER HD  
PANEL SCREWS - 12' O.C.  
ENTIRE TOP EDGE

PANEL END  
PLUMB CUT

PLACE SEALANT BEADS  
BETWEEN TOP PLATE  
AND ROOF PANEL  
PRIOR TO CONNECTION



**B2.9** ROOF TO WALL DETAIL - A  
NOT TO SCALE

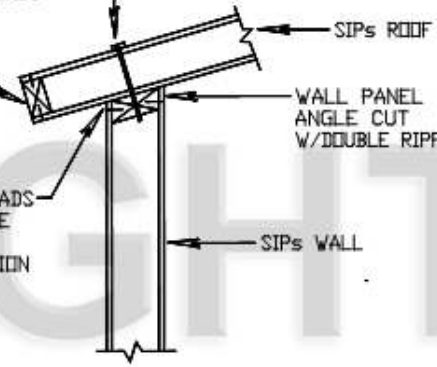
KCB2.9  
990201

2x NAILED/STAPLED  
@ 6' O.C. BOTH SIDES  
IN ROOF PANEL ENDS

SQUARE DRIVE - WAFER HD  
PANEL SCREWS - 12' O.C.  
ENTIRE TOP EDGE

WALL PANEL  
ANGLE CUT  
W/DOUBLE RIPPED 2x

PLACE SEALANT BEADS  
BETWEEN TOP PLATE  
AND ROOF PANEL  
PRIOR TO CONNECTION



**B2.10** ROOF TO WALL DETAIL - B  
NOT TO SCALE

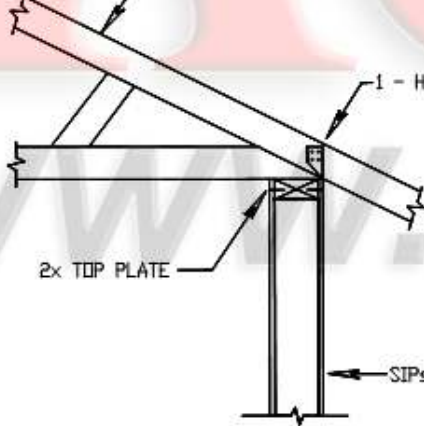
KCB2.10  
990201

CONVENTIONAL TRUSS

1 - H2.5 TIE @ EACH TRUSS

2x TOP PLATE

SIPs WALL



**B2.11** TRUSS TO PANEL DETAIL  
NOT TO SCALE

KCB2.10  
990201

SIPs

FACE EXPOSED HEADER w/DSB

MULTI 2x's INSERTED IN ROUTED AREA

MULTI 2x's  
AND 1/2' OSB  
TO FORM  
HEADER

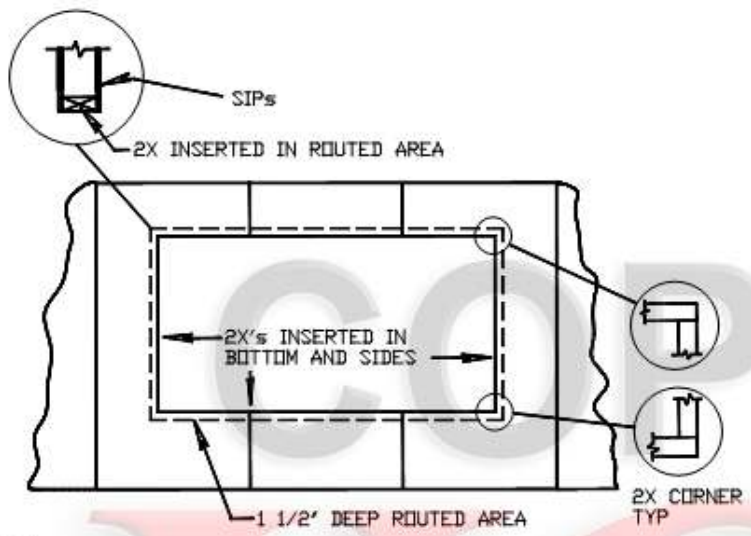
2x's INSERTED IN  
BOTTOM AND SIDES

1 1/2' DEEP ROUTED AREA

2x CORNER  
TYP

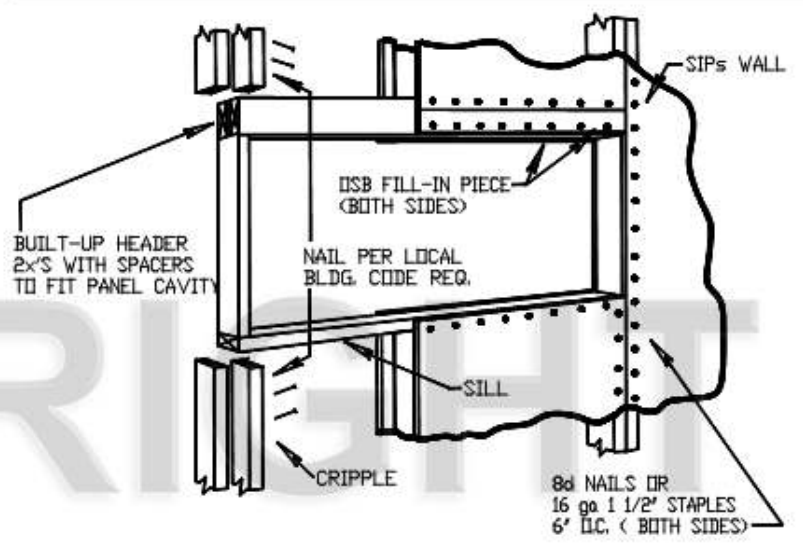
**B3.1** TYP WINDOW OPENING w/ HDR  
NOT TO SCALE

KCB3.1  
990201



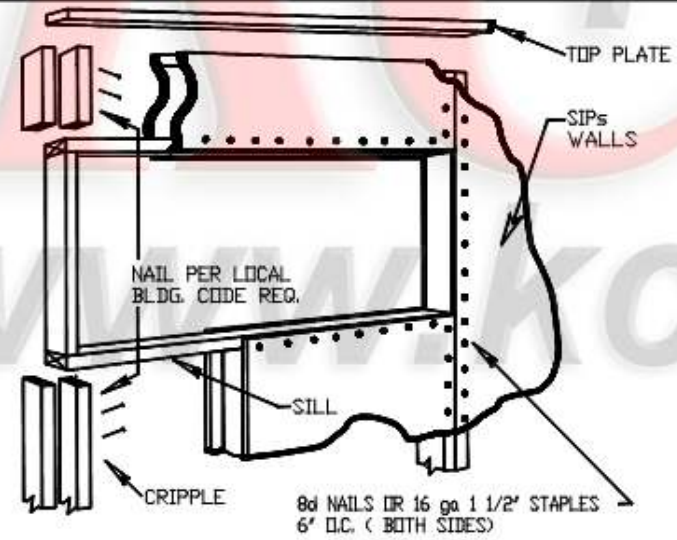
**B3.2** TYP WINDOW OPENING w/ NO HDR  
NOT TO SCALE

KCB3.2



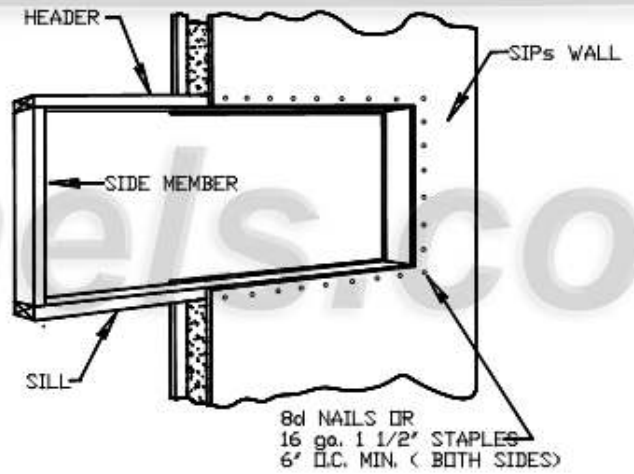
**B3.3** WINDOW DETAIL / HEAVY POINT LOADING  
or LARGE SPANS  
NOT TO SCALE

KCB3.3  
990201



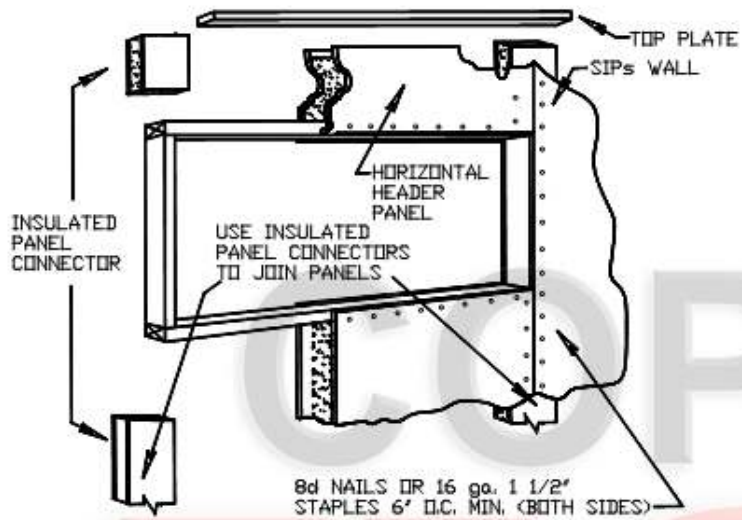
**B3.4** WINDOW DETAIL / MEDIUM LOADING  
or MODERATE SPANS  
NOT TO SCALE

KCB3.4  
990201

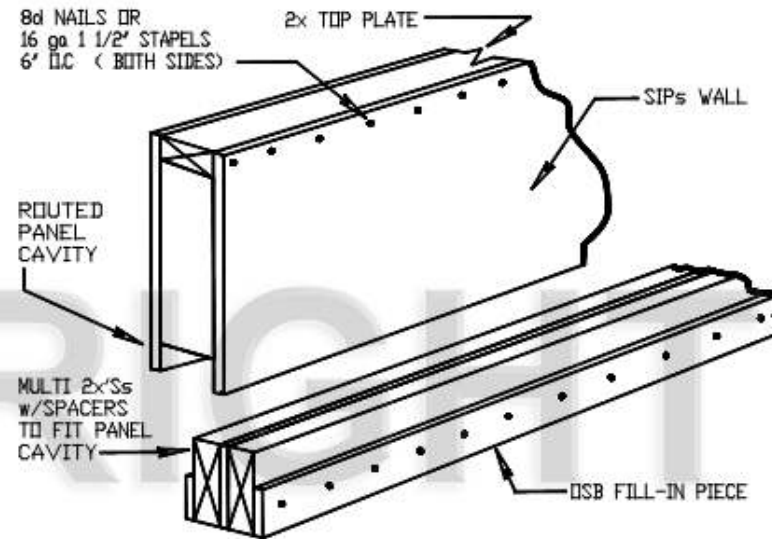


**B3.5** WINDOW DETAIL / LIGHT DISTRIBUTED  
LOADS  
NOT TO SCALE

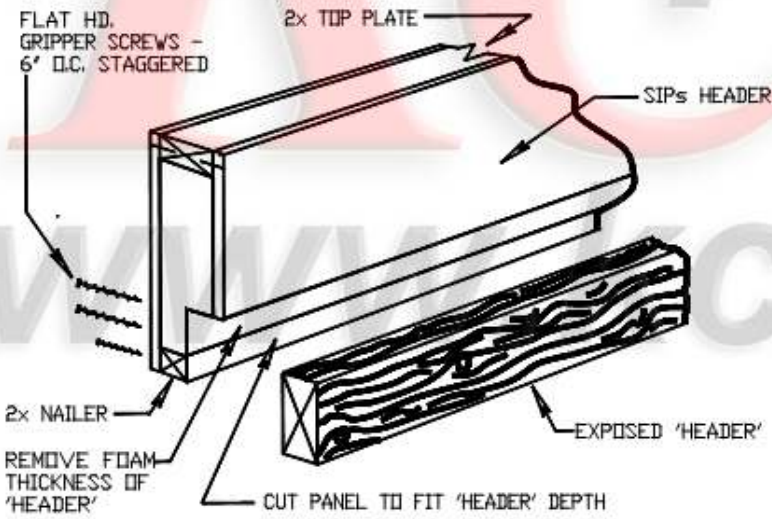
KCB3.5



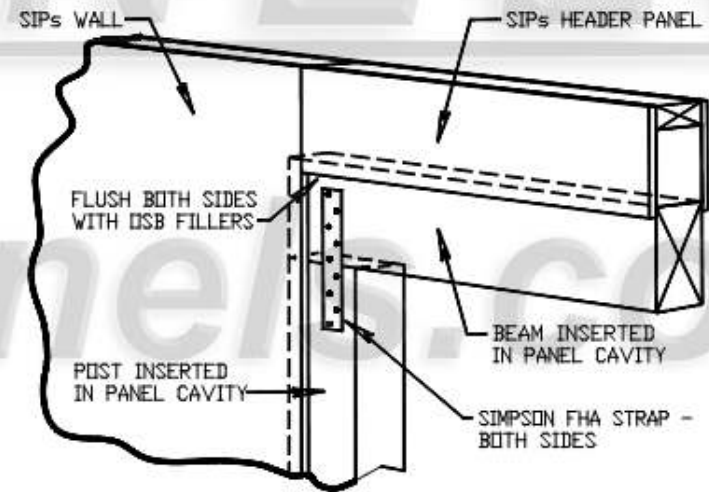
**B3.6** WINDOW DETAIL / USING INSULATED PANEL CONNECTORS  
 NOT TO SCALE KCB3.6



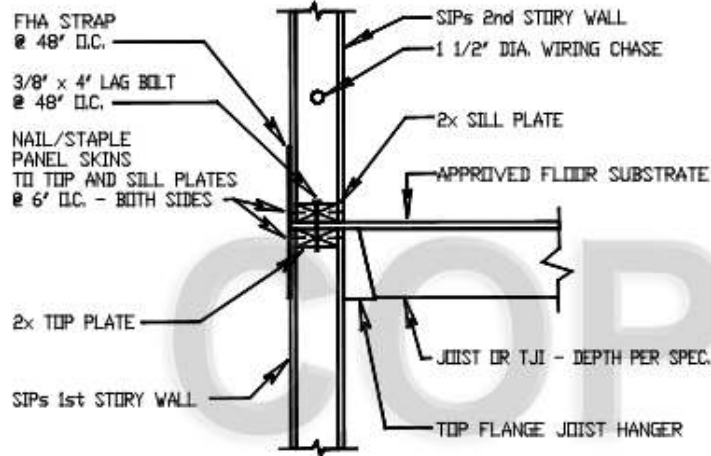
**B4.1** BUILT-UP HEADER DETAIL  
 NOT TO SCALE KCB4.1  
990201



**B4.2** EXPOSED HEADER DETAIL  
 NOT TO SCALE KCB4.2  
990201

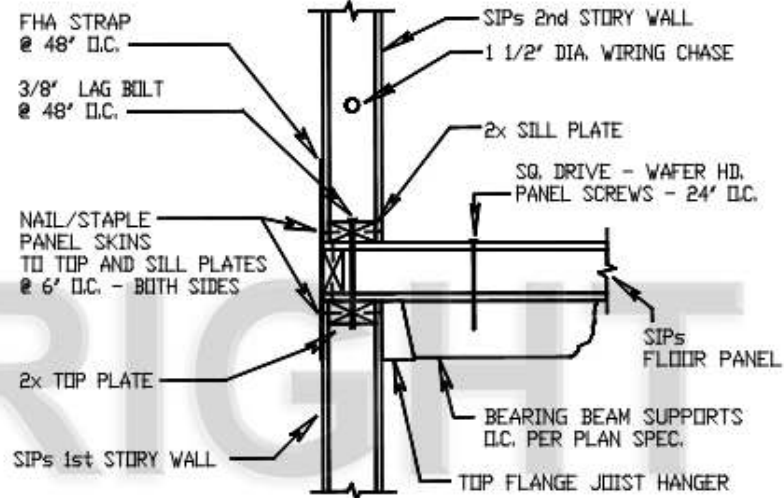


**B4.3** POST AND BEAM DETAIL  
 NOT TO SCALE KCB4.3  
990201



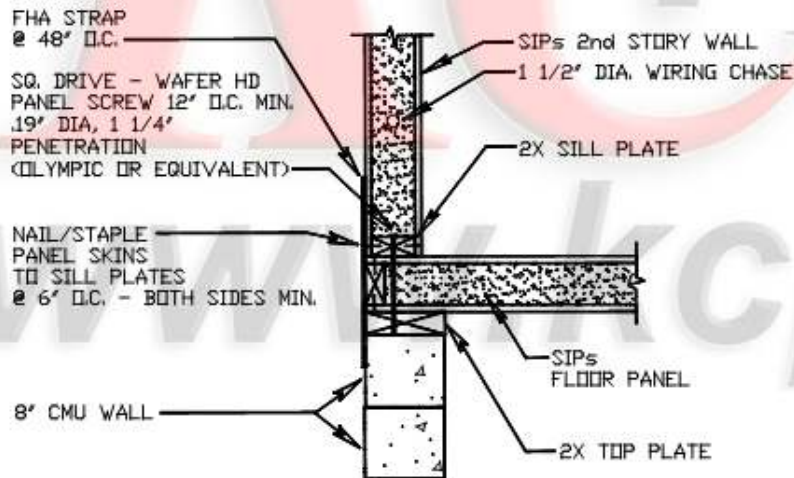
**B5.1** TWO STORY WALL DETAIL - A  
NOT TO SCALE

KCB5.1  
990201



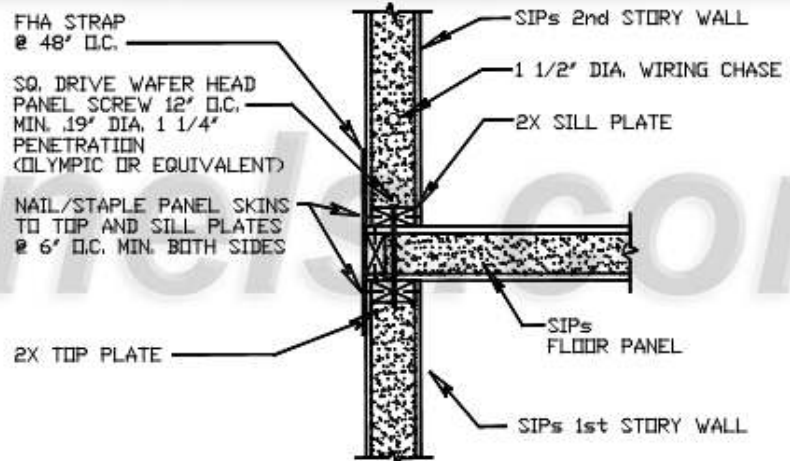
**B5.2** TWO STORY WALL DETAIL - B  
NOT TO SCALE

KCB5.2  
990201



**B5.3** TWO STORY WALL DETAIL - C  
NOT TO SCALE

KCB5.3



**B5.4** TWO STORY WALL DETAIL - D  
NOT TO SCALE

KCB5.4

#6 x 3"  
GRIPPER SCREWS  
MINIMUM OF 6  
EQUALLY SPACED

16' x 16' x 1/2"  
CDX PLYWOOD

VIGA POLE  
NOT TO EXCEED  
12' DIAMETER OR  
12' PROJECTION

CENTER VIGA TO  
BACKING PLATE

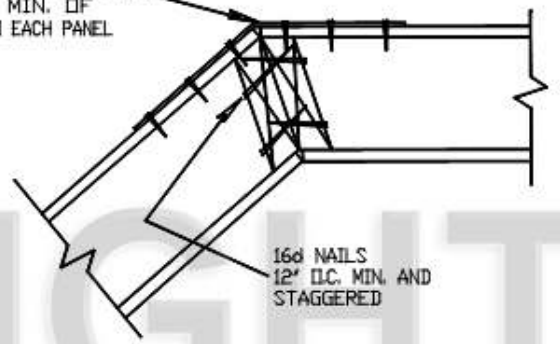
ATTACH ASSEMBLY TO  
STRUCTURAL PANEL FACE

#6 x 1 1/4"  
GRIPPER SCREWS  
MINIMUM OF 8

**B6.1** EXT. VIGA ATTACH DETAIL  
NOT TO SCALE

KCB6.1  
990201

ST STRAP OR EQUIV.  
MIN. TWO STRAPS ON TOP OF POST  
24" O.C. W/. MIN. OF  
2-16d NAILS INTO EACH PANEL



16d NAILS  
12" O.C. MIN. AND  
STAGGERED

BEVEL, GLUE AND NAIL TWO 2X LUMBER  
TO FORM A SOLID POST  
THEN ATTACH PANELS TO POST

**B6.2** 45 DEGREE POST DETAIL  
NOT TO SCALE

KCB6.2  
990201

2x TOP PLATE

2x LEDGER PLATE NAILED

2x JOIST

SQUARE DRIVE  
PANEL SCREWS  
STAGGERED AT  
12" O.C.

SIPs WALL

SIMPSON LU HANGER  
@ EACH JOIST

**B6.3** LEDGER DETAIL  
NOT TO SCALE

KCB6.3  
990201

OPTIONAL  
VERTICAL WIRE CHASE

STANDARD 1 1/2"  
HORIZONTAL  
WIRE CHASE  
@ 16" OFF FLOOR

CUT HOLE AND  
REMOVE FOAM  
SO FLANGED BOX  
CAN BE INSERTED -  
SECURE BOX FLANGE  
TO PANEL FACE WITH  
FLATHEAD SCREWS

DRILL THRU PLATE FOR  
2 STORY OR BASEMENT  
WIRING ACCESS

**B6.4** PANEL WIRING DETAIL  
NOT TO SCALE

KCB6.4  
990201